



ShenZhen TOPLED Optotech Co.,LTD

PART 1

____Company Profile____

Company Profile



Shenzhen TOPLED Optotec Co., Ltd, (herein after call TOPLED), is a professional led manufacturer established in May 2006, with a registered capital of RMB51 million. The company has been focusing on the research, manufacture and engineering service. TOPLED'S business covers indoor and outdoor led display, led curtain, LED components, LED multimedia advertising screen, stadium display, highway and transportation changeable message sign, rental display, indoor and outdoor led lighting etc. TOPLED is a high-tech company specializing in LED researching, manufacturing, marketing and engineering service to provide customers with high-quality services.



TOPLED has passed national CCC and international CE, CQC, FCC and Rohs approval, and strictly comply with ISO9001(2000) international quality system and ISO14000(1996) environment system requirement. With years of development, TOPLED has equipped with the most advanced automatic manufacture devices of LED products. So far, TOPLED's products have been brought into more than 35 countries all over the world, along with our reliable performance and praise from customers.

The Development Course

Early Establishment

01

2006

In May 2006, the company was established. At the initial stage, it was mainly committed to the production and development of indoor and outdoor LED lighting products.

Expanding Business

02

2007-2009

Expanding business and developing to research, manufacture, sales, engineering installation service and overseas sales of LED display products.

Innovation & Development

03

2010-2013

Passing certificates of ISO9001 international quality system and ISO14001 environment system.

Continuous Development

04

2014-2017

Obtaining the key technology invention patent, 23 related patents and honors.

Accord Development

05

2018

In order to meet customer's demand for orders and the development of new product, the factory is being planned to extend.....

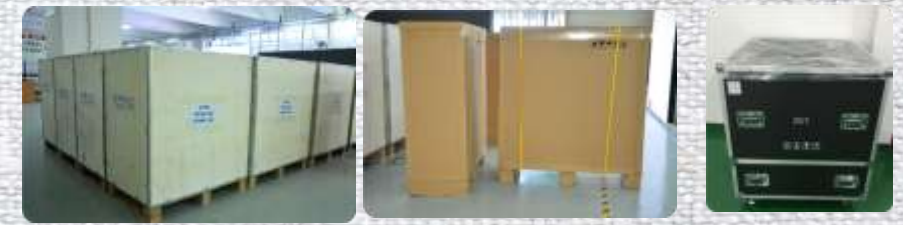
Production Process



SMT Workshop



Assembly workshop



Packaging



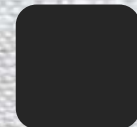
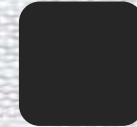
Aging Test



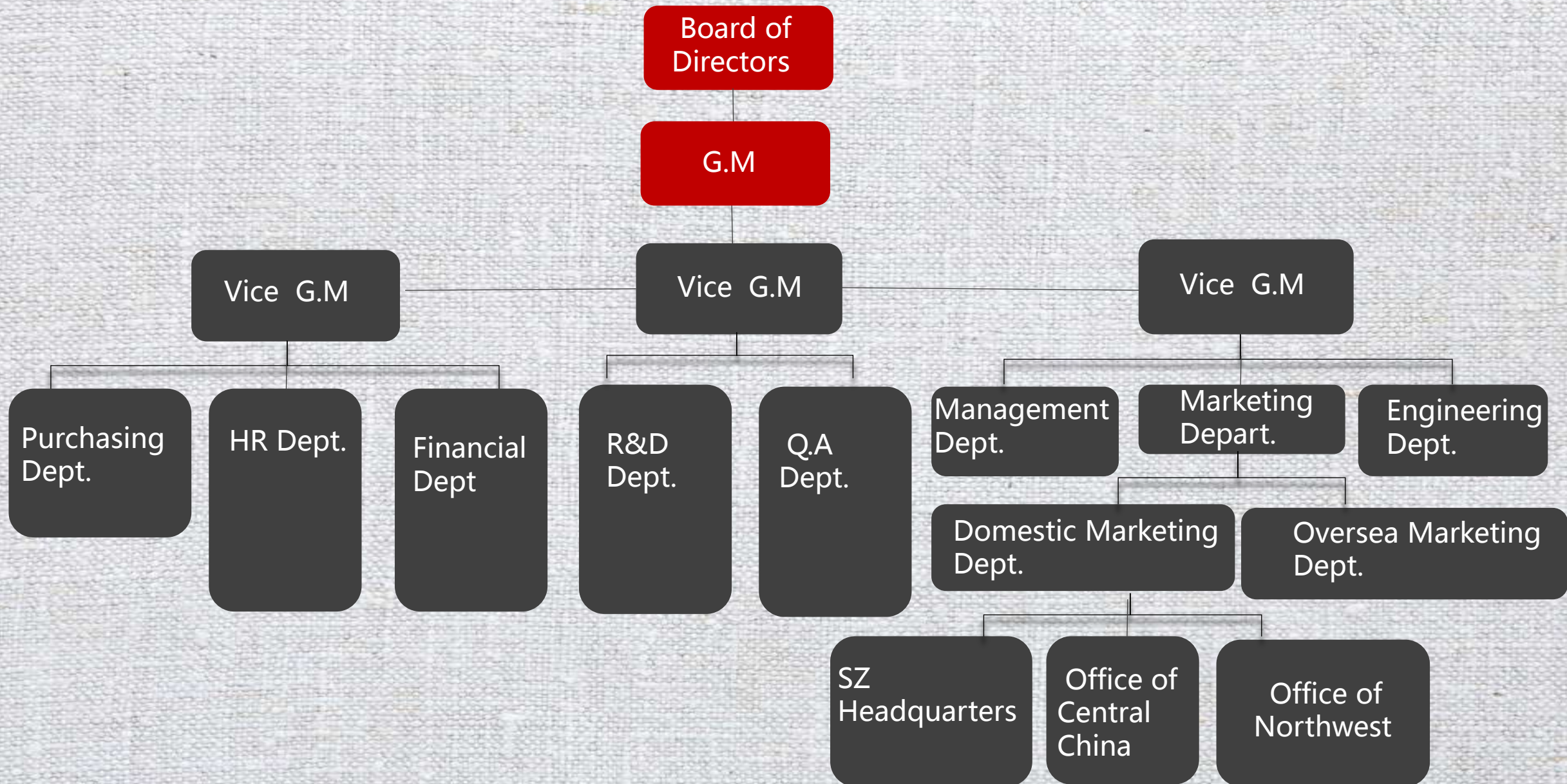
The Plan of Factory Extending

With the continuous increase of production and development, in order to meet the customer's demand for orders, and the double guarantee of delivering on time and ensuring the aging efficiency and quality. At present, the factory is selecting the site to extend, and the new factory area is about 7000 square meters.

At the same time, it is a great honor for us to have the support and trust of customers from all over the world. Hope in the follow-up cooperation, we can get mutual benefit and progress.



The structure of the organization



PART 2

—The Enterprise— Culture

Cultural Life



In order to relieve the stress and cultivate good team spirit, the company organizes various departments to have outdoor activities regularly.



Staff Value-Added System

With company's continuous development and expansion, the demand for talents continues to increase. In order to help the staff have a better knowledge of corporate culture and product information, improve their own personal ability, let staff have a better understanding of customer and market needs, the in-house or third-party's training is organized regularly. (knowledge, skills and mentality)



2015年8月 环球资源 展会操作培训



2016年10月 环球资源 管理人员培训





WH Technology Corp.



CERTIFICATE OF COMPLIANCE

For the following equipment :

Equipment Under Test : LED DISPLAY

Model Name: P1.0, P1.667, P1.8, P2.0, P2.5, P3, P4, P5, P6, P7.62, P8, P10, P12, P14, P16, P18, P20, P22, P25, P30, P31.25, P40, P50, P100, P150

Applicant: SHENZHEN TOPLED OPTOTECH CO., LTD.
2th Floor, A Building, Chashu Factory, HangCheng Industrial Park, Xixiang Town, Baoan, China

Report No. : CF16020102

Is here with confirmed to comply with the requirements set out in the FCC Rules and Regulations Part 15 Subpart B and CISPR PUB. 22 and the measurement procedures were according to ANSI C63.4-2015. The said equipment in the configuration described in this report shows the maximum emission levels emanating from equipment are within the compliance requirements.

FCC part 15 subpart B

Class A

The test was carried out on Jan. 10, 2016 at WH Technology Corp.



Mike

Taipei, Taiwan

(Place)

Jan. 25, 2016

(Date)

(Signature) Designation Number: TW1083.



CERTIFICATE FOR CHINA COMPULSORY PRODUCT CERTIFICATION

No. : 2015010903827778

NAME AND ADDRESS OF THE APPLICANT

SHENZHEN TOPLED OPTOTECH CO., LTD.
2nd Flock A , Tea Plants, Hangcheng Industrial area, Bao, an Dist

NAME AND ADDRESS OF THE MANUFACTURER

SHENZHEN TOPLED OPTOTECH CO., LTD.
2nd Flock A , Tea Plants, Hangcheng Industrial area, Bao, an Dist

NAME AND ADDRESS OF THE FACTORY

LongRun Optoelectronic Co., Ltd
Building C, No. 6 Tangwei Industrial Avenue, Fuyong street, Baoan District, Shenzhen, China.

NAME, MODEL AND SPECIFICATION

LED DISPLAY
P1.8, P2.5, P3, P4, P5, P6, P7.62, P8, P10, 220V~ 50Hz 5A (产品销售时不带电线组件)

THE STANDARDS AND TECHNICAL REQUIREMENTS FOR THE PRODUCTS

GB4943.1-2011; GB9254-2008(A级); GB17625.1-2012

This is to certify that the above mentioned products have met the requirements of implementation rules for compulsory certification (REF NO. CNCA-C09-01:2014).

Date of issue: Dec. 11, 2015 Date of expiry: Jun. 04, 2020

Validity of this certificate is subject to positive result of the regular follow up inspection by issuing certification body until the expiry date.

This certificate can be verified through CNCA's website: www.cnca.gov.cn



President:

Wang Kejiao

CHINA QUALITY CERTIFICATION CENTRE

Section 9, No. 188, Nansihuan Xilu, Beijing 100070 P.R. China

<http://www.cqc.com.cn>



Q 1294907

Certificates



TOPLED is one of the manufacturer passes the certificates of ISO9001 international quality system and ISO14001 environment system.

PART 3

— Company —
Honor



The inventor for the technology of outdoor SMD encapsulation.

The holder of a patent for key technology invention.



So far TOPLED has obtained 23 LED related patents.



Honorary Credentials



PART 4

—— Cooperation Case ——



Strategic Partners





Long-term cooperative manufacturers



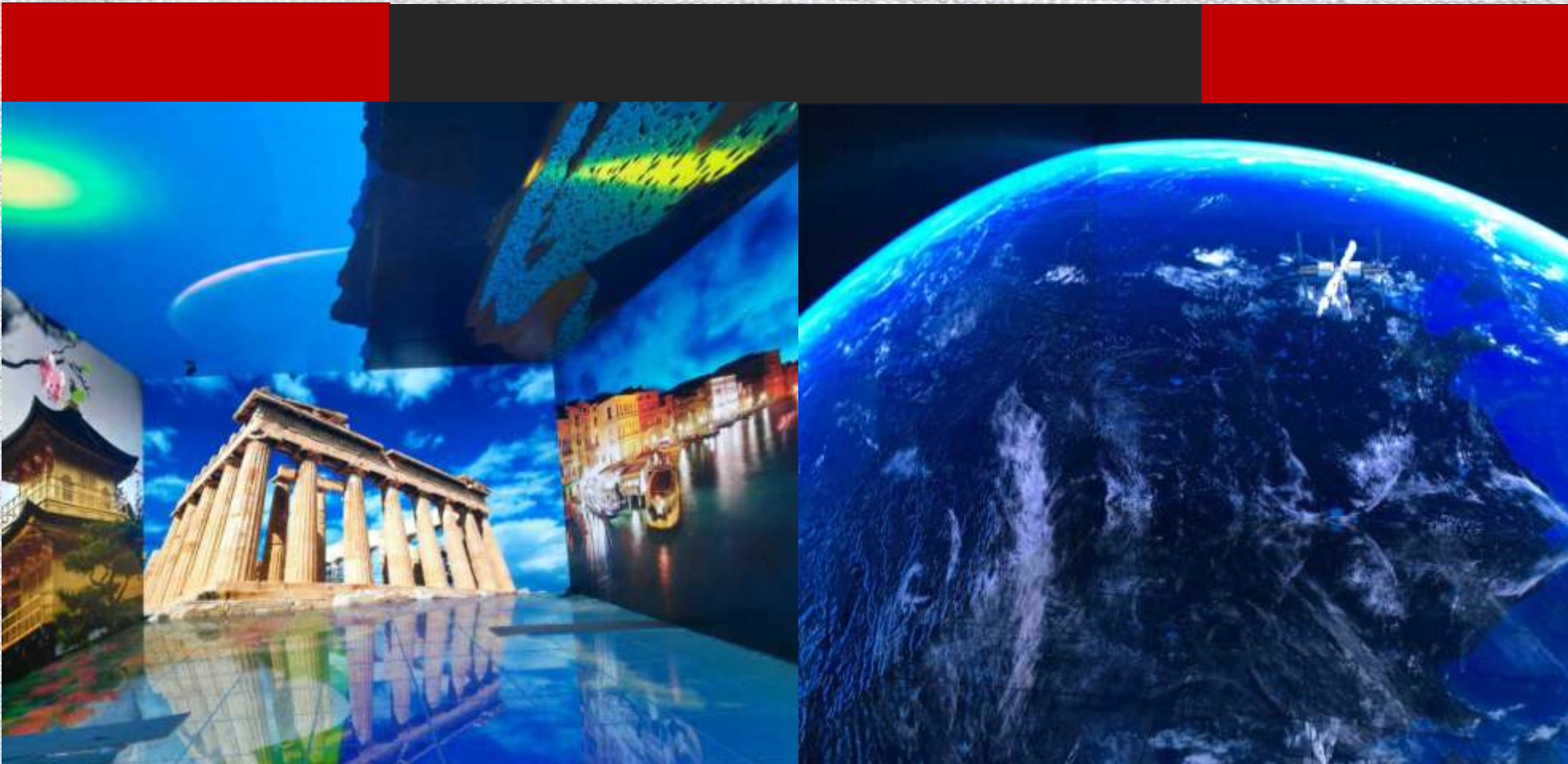
The Case Shows

 Guangzhou Baiyun AirPort LED Display, P2.5mm, 120 m²



The Case Shows

 (China Crystalline Grapheme Exhibition Hall), P3mm, 449 m²



The Case Shows



Beijing Bird's Nest International Tourism Program.(LED Curtain+Stage LED Display)

P3/P4/P5 About200m²



The Case Shows



Dongguan KERI Building
P10 CREE 314.57m²



The Case Shows



Powerlong Real Estate Outdoor CREE About 800m²



The Case Shows



Phoenix TV Asian Studios LED Display and LED Lighting (Hongkong)



Part Cases of Overseas



Korea Music Festival Stage LED Display



Philippines Manila Square P20, 250sqm



Part Cases of Overseas



America PRINCESS CRUISES



Australia Pacific Pearl Cruise
Stage LED Display



America CARIBBEAN PRINCESS
CRUISES





Win-win cooperation, sharing the future!



website : www.cntopleds.com



TEL : 86-0755-2788 9985